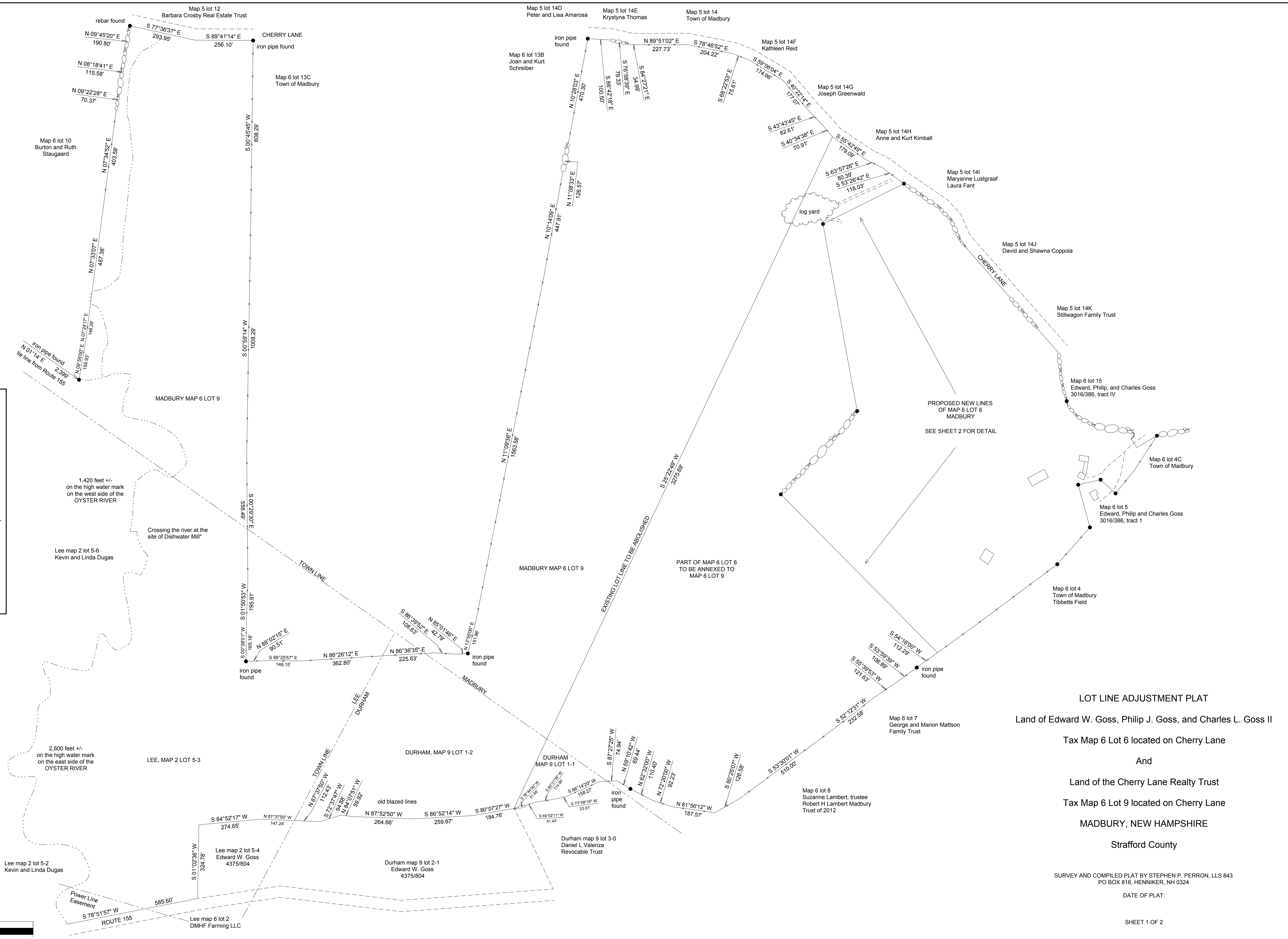
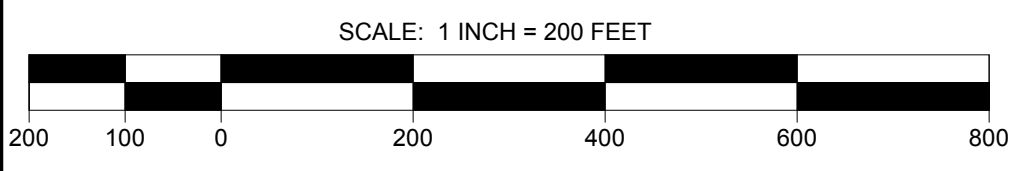
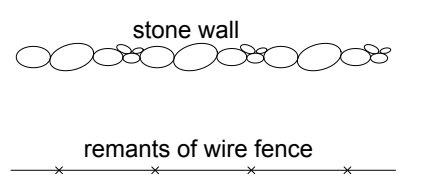


APPROVED BY THE MADBURY PLANNING BOARD

LEGEND:



LOT LINE ADJUSTMENT PLAT

Land of Edward W. Goss, Philip J. Goss, and Charles L. Goss II

Tax Map 6 Lot 6 located on Cherry Lane

And

Land of the Cherry Lane Realty Trust

Tax Map 6 Lot 9 located on Cherry Lane

MADBURY, NEW HAMPSHIRE

Strafford County

SURVEY AND COMPILED PLAT BY STEPHEN P. PERRON, LLS 843
PO BOX 816, HENNIKER, NH 0324

DATE OF PLAT:

SHEET 1 OF 2